



# CHI HENG CNC MACHINING SERVICES



## **Dongguan Chiheng Hardware Co., Ltd**

Contact: Jion

Email: [sales06@chihenghardware.com](mailto:sales06@chihenghardware.com)

Tel: +86 183 9872 5443 (Whatsapp)

Website: [www.chihenghardware.com](http://www.chihenghardware.com)

Factory Address: No.18 Jin Tang Street, Shatou Village,  
Chang' an Town, Dongguan, Guangdong, China

# COMPANY PROFILE

Dongguan Chiheng Hardware Co.,Ltd (Chiheng Hardware) was established in 2009 and located at Chang'an Town, Dongguan, China. With 5000 square meters' plant, Chiheng Hardware is mainly providing the CNC machining services and precision metal and plastic parts production.

Our main business is CNC machining, plastic injection molding and stamping parts. We now have sophisticated CNC machining centers, engraving and drilling machine, injection molding machine, stamping machine, compressor, lathe and milling machine, line cutting and other equipment.

With these machines and experienced employees, we are able to make repeated positioning accuracy within tolerance  $\pm 0.005\text{mm}$ , providing strong guarantee for precision parts.

Chiheng strives to exceed our customers' expectation and offer competitive pricing and on-time delivery while maintaining stringent standards of quality. Statistical process control techniques are used throughout the manufacturing facilities as required, and the quality system implemented has successfully attained ISO 9001:2008 certification. The goal is to create reliable, viable and affordable molds, CNC machining parts and fast sample service for every industry.

At Chiheng Hardware, we design, program, prototype and manufacture products. Our flexible development processes can provide you with different manufacturing solutions based on your project and demands. We are dedicated to providing manufacturing solutions for your innovation ideas and products, with one-stop services from prototyping to batch production, including a wide range of services: CNC Machining, Stamping, Injection Molding and various of surface treatment.

Through years' experience and development since its foundation in 2009, Chiheng has become one of the leading exporters in China, and build an impressive reputation from our partners and customers at home and abroad.

# CHI HENG HARDWARE PROCESSING SERVICES

## OUR ADVANTAGE

### (1) One-stop Shop Solutions

From the study and design to manufacturing, supportive processing and assembling.

### (2) Research & Development

We help you design and develop new innovative products and solutions.

### (3) Quality Control 1-by-1

To all produced items by our fully equipped quality control department.

### (4) Flexibility

We accept orders and manufacture from one piece to complete production based on your needs.

### (5) Certified Materials

Stainless steel, iron, brass, aluminum, titanium, special steels, industrial plastics.

### (6) Short Delivery Times

Receive your orders on time, avoid bottlenecks and improve your production efficiency.

## 10 REASONS TO CHOOSE US

### (1) Complete CNC machining solutions

### (2) Short delivery times

### (3) Superb finish

### (4) CNC manufacturing from a single piece to complete batches

### (5) Complex parts and components of 1 - 1000mm

### (6) Certified materials of top quality

### (7) Strict quality control in all pieces one by one

### (8) Fully trained specialized CNC programmers and operators

### (9) ISO-certified

### (10) Absolute confidentiality (NDA agreements)

# EQUIPMENT LIST

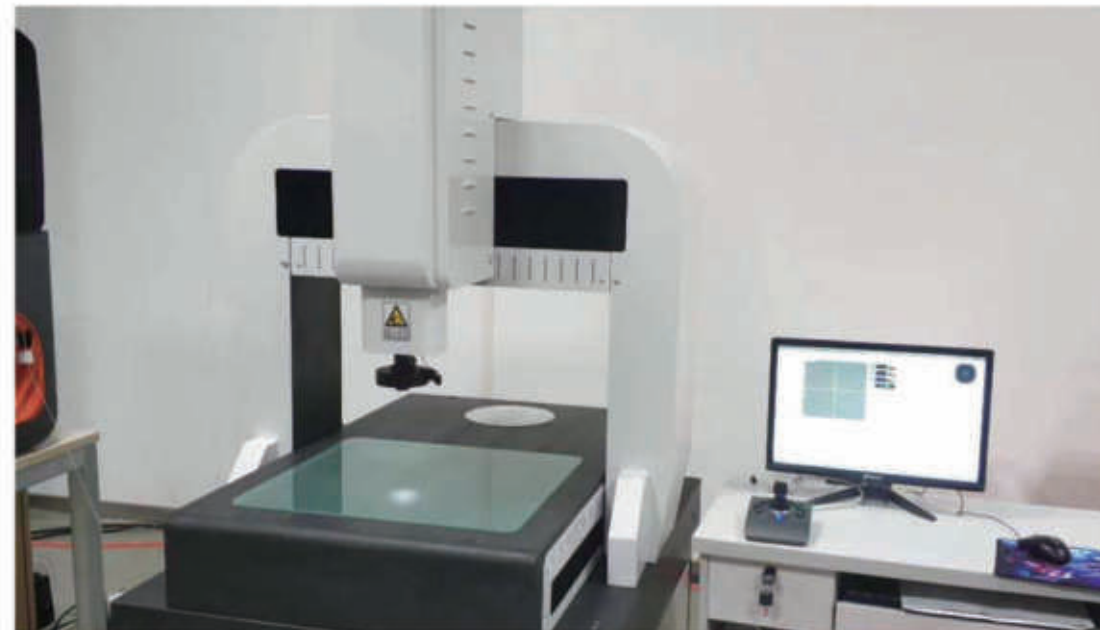
## Numerical control lathe

production line	equipment	Processing size	precision	quantity
Lathe group	43 CNC lathes(Model CK-46) Two automatic manipulator	280×420 mm	0.01~0.05 mm	45



## Quality inspection equipment

Device name	Test height	precision	quantity
second element	250x150x200	±1μm	1
CMM (COORDINATE MEASURING MACHINE)	500×600×400	±3.5μm	1
Lathe group	15mm	±0.01mm	3
	75mm	±0.01mm	3
micrometer	25mm	±0.01mm	3
	75mm	±0.01mm	1
Digital caliper	150mm/250mm	±0.01mm	20
Vernier caliper	500mm/1500mm	±0.01mm	2



# EQUIPMENT LIST

## CNC milling machine

production line	equipment	Processing size	precision	quantity
CNC group	CNC milling machine 13 sets four axis 6 sets five axis 3 sets	800×500 mm	0.01~0.05 mm	22



## Other auxiliary equipment

production line	Equipment use	quantity
Vibrating finishing machine	The workpiece and the abrasive rub against each other to achieve the effect of surface treatment.	1
Ultrasonic Cleaner	Cleaning workpiece attachment: cutting oil, abrasive, iron chip, dust, fingerprint.	1
stock-cutter	Rough cut material according to drawing size.	1



# ALUMINUM ALLOY PARTS SERVICE

Type: Plate, Bar, Pipe, Square, Profile,  
Category : 6061,6063,7075,5052,6082



# ALUMINUM ALLOY PARTS SERVICE

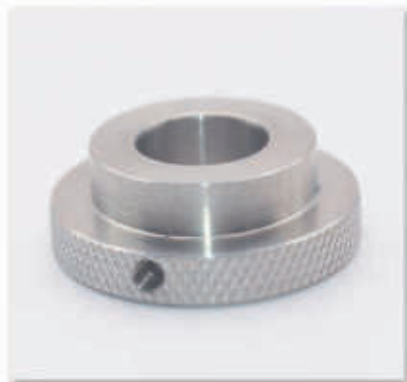
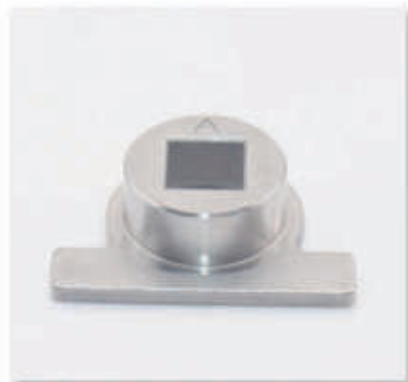
Type: Plate, Bar, Pipe, Square, Profile,  
Category : 6061,6063,7075,5052,6082



# STAINLESS STEEL PARTS SERVICE

Type: Plate, Bar, Pipe, Square, Profile,

Series: 200,300,400,500,600





# COPPER SERIES

Type: plate, bar, pipe, square, profile

Category: pure copper T series, brass H series, bronze Q series, white copper B series



# PLASTIC PARTS SERVICE

Type: Plate, Bar, Pipe, Square, Profile,

Series: POM/ABS/PEEK/PVC/PC/PP/Nylon/Bakelite/Acrylic



# PRECISION METAL STAMPING

Material: ABS+PC, PP, PC, ABS, PA, HIPS, PVC, PE, PS, POM, ACRYLIC, PMMA

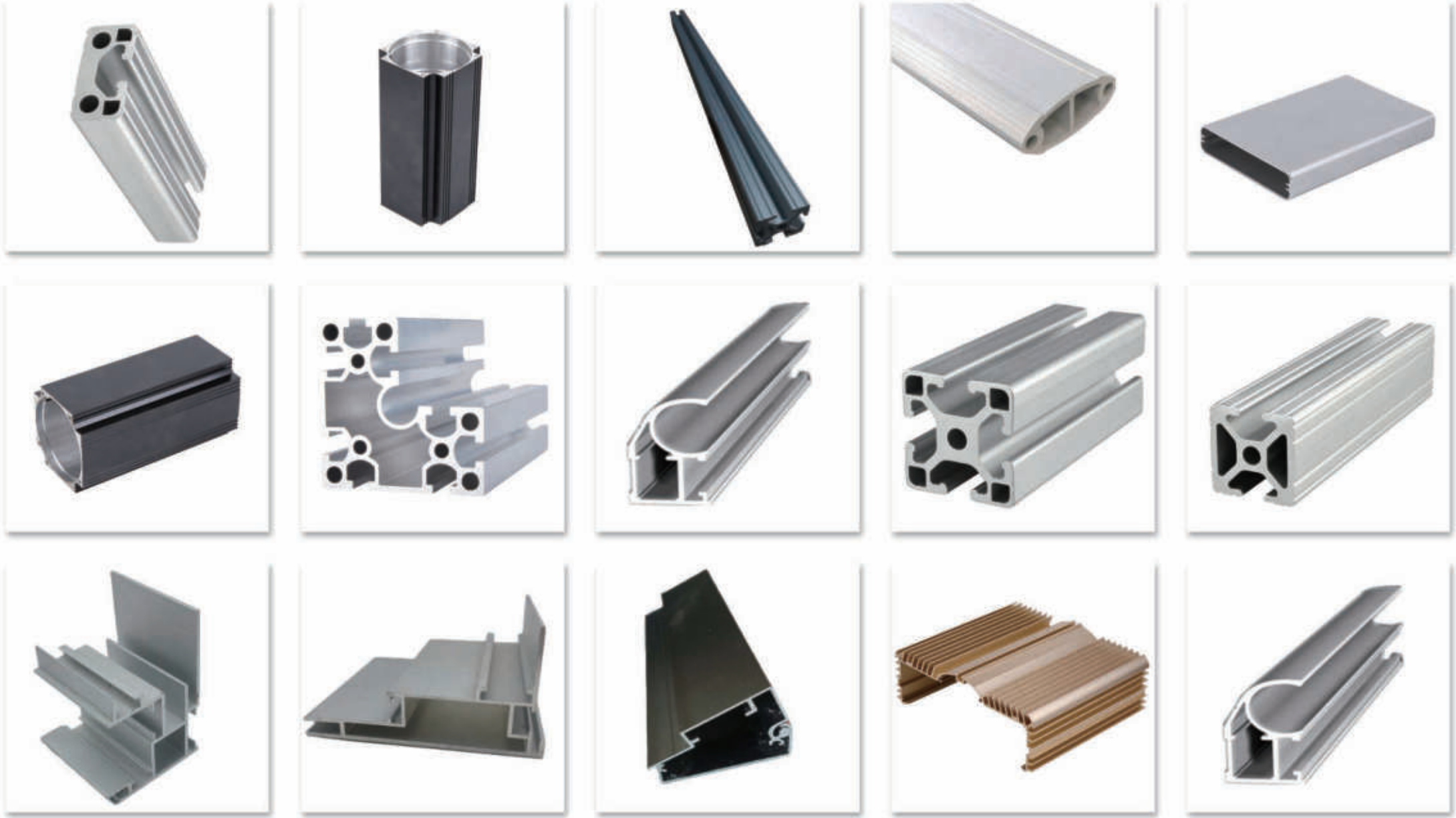
Surface Smooth : Mossy, Textured, Matte



# CUSTOM EXTRUSION

Material: Aluminum Alloy, Zinc Alloy, Stainless Steel, Brass, Plastic, Nylon, Etc.

Tolerance: 0.01mm- +/-0.005mm



# SURFACE TREATMENT

Process : Polishing/Heat Treatment/Anodic Oxidation  
Sand Blasting/Electroplating/Teflon Coating/Rust Out  
Nickel Plating/Chrome Plated, Etc.



## Mirror Polishing

Mechanical mirror polishing is to achieve a smooth, bright mirror-like surface on metal materials through the polishing process (rough grinding, fine grinding) and polishing process (WENDT three-step polishing).



## Heat Treatment

Heat treatment refers to the material in solid state, through the means of heating, heat preservation and cooling, in order to obtain the expected structure and properties of a metal thermal processing technology.



## Anodic Oxidation

Anodic oxidation can do a variety of color surface effect, aluminum alloy in the corresponding electrolyte and specific process conditions, due to the action of the impressed current, aluminum products (anode) on the formation of a layer of oxide film process.

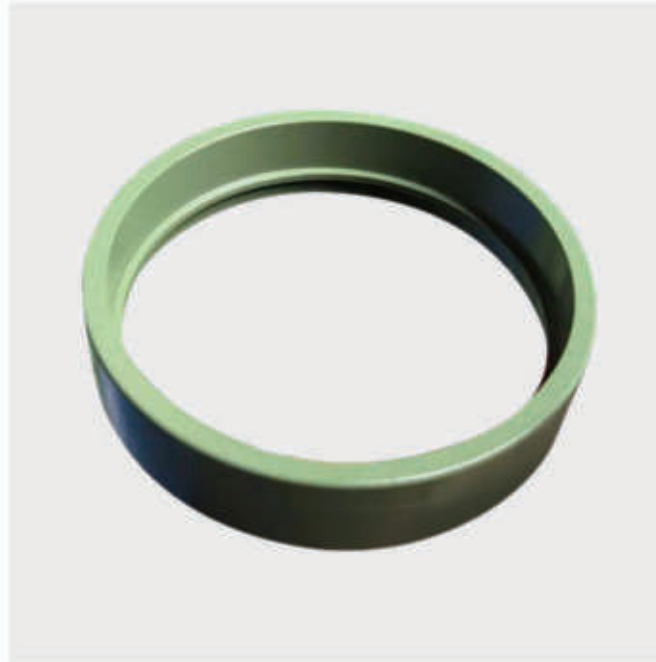
# SURFACE TREATMENT

Process : Polishing/Heat Treatment/Anodic Oxidation  
Sand Blasting/Electroplating/Teflon Coating/Rust out  
Nickel Plating/Chrome Plated, Etc.



## Sandblasting Oxidation

The mechanical properties of the workpiece surface are improved, thus improving the fatigue resistance of the workpiece, increasing the adhesion between it and the coating, extending the durability of the coating film, but also conducive to the flow and decoration of the coating.



## Teflon Coating

Excellent scratch resistance and corrosion resistance, high hardness, good wear resistance, excellent high temperature resistance, long-term high temperature use, luster and color stability. Green environmental protection, harmless to human body



## Electroplating

Electroplating is the process of plating a thin layer of other metal or alloy on some metal surface using electrolysis principle, improving wear resistance, electrical conductivity, reflection, corrosion resistance and enhance beauty