



CHI HENG CNC MACHINING SERVICES



Dongguan Chiheng Hardware Co., Ltd

Contact: Jion















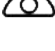
Email: sales06@chihenghardware.com

Tel: +86 183 9872 5443 (Whatsapp)

Website: www.chihenghardware.com

Factory Address: No.18 Jin Tang Street, Shatou Village,
Chang'an Town, Dongguan, Guangdong, China

TABLE CONTENT

| | | |
|---|--------------------------------|-------|
|  | Company profile | 02 |
|  | Equipment list | 04 |
|  | CNC machining part | 06~10 |
|  | Aluminium alloy series..... | 06 |
|  | Stainless steel series | 08 |
|  | Copper products series | 09 |
|  | Plastic series | 10 |
|  | Die Casting..... | 11 |
|  | Extrusion..... | 12 |
|  | Invesment Casting | 13 |
|  | Plastic Injection..... | 14 |
|  | Stamping | 15 |
|  | Mechanical Keyboard | 16 |
|  | Surface treatment proces | 17~18 |
|  | Contact us..... | 19 |

COMPANY PROFILE

Dongguan Chiheng Hardware Co., Ltd, established in 2009. Its predecessor was a CNC machine part manufactory with 5,000 square meters platform . We have total more than 100 sets of key machines, such as CNC machining centers, engraving and drilling machine, lathe and milling machine, line cutting machine, etc. After more than ten years' development, we are now able to make repeated positioning accuracy within tolerance +/- 0.005mm.

Our main business is CNC machining, plastic injection molding, die casting and stamping parts. We now have sophisticated CNC machining centers, engraving and drilling machine, Injection molding machine, stamping machine, compressor, lathe and milling machine, line cutting and other equipment.

With these machines and experienced employees, we are able to make repeated positioning accuracy within tolerance +/-0.005mm, providing strong guarantee for precision parts.

With the advantages of the factory, we can provide OEM and ODM service. What' s more, we have a strong R&D team, constantly develop new products, and always prepare large in stock for customers to test our quality and service.

Welcome to Chiheng Hardware at any time ! Tks!

COMPANY PROFILE

Advantages Of Chiheng Hardware CNC Machining Services For Product Developers

CNC machining services at Chiheng Hardware have many advantages for product development that can make it the ideal solution not only for rapid prototyping but also for volume production.

Here is what you should consider.

- Quick removal of large amounts of metal as well as engineering-grade plastic resins Highly accurate and repeatable
- Excellent for making complex geometries
- Versatile
- Suitable for many different kinds of substrates
- Scalable volumes from one to 100,000
- Low investment in tooling and preparation cost
- Fast turnaround
- Parts are full-strength and can be put into service immediately
- Excellent surface finishes
- Easily customized

EQUIPMENT LIST

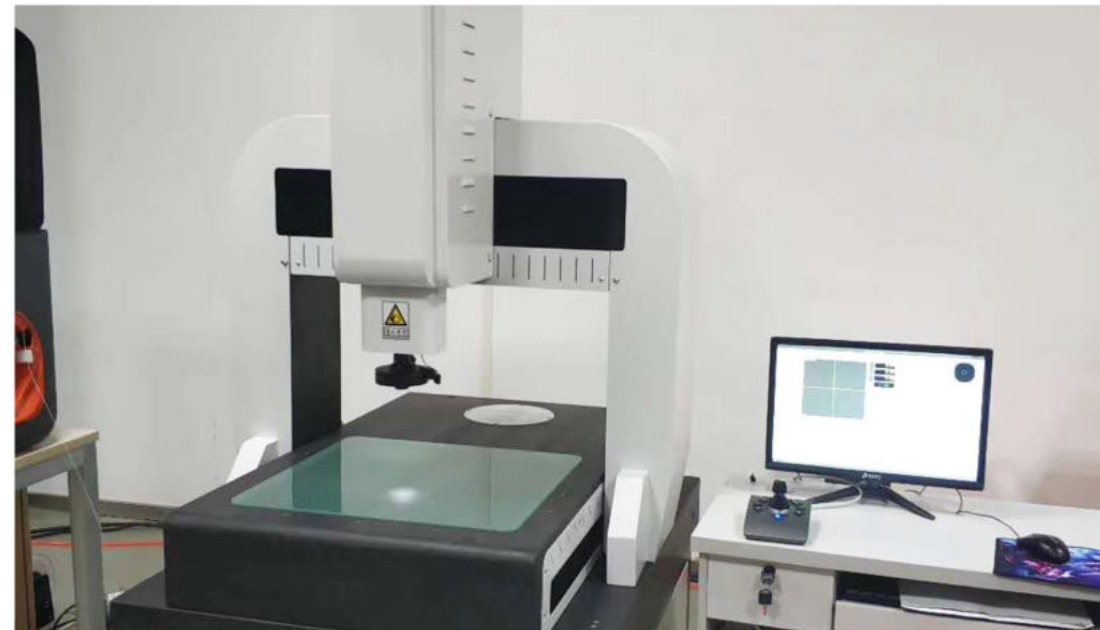
Numerical control lathe

| production line | equipment | Processing size | precision | quantity |
|-----------------|---|-----------------|--------------|----------|
| Lathe group | 43 CNC lathes(Model CK-46) Two automatic manipulator | 280×420 mm | 0.01~0.05 mm | 45 |



Quality inspection equipment

| Device name | Test height | precision | quantity |
|--|--------------|-----------|----------|
| second element | 250x150x200 | ±1μm | 1 |
| CMM (COORDINATE MEASURING MACHINE) | 500×600×400 | ±3.5μm | 1 |
| Lathe group | 15mm | ±0.01mm | 3 |
| | 75mm | ±0.01mm | 3 |
| micrometer | 25mm | ±0.01mm | 3 |
| | 75mm | ±0.01mm | 1 |
| Digital caliper | 150mm/250mm | ±0.01mm | 20 |
| Vernier caliper | 500mm/1500mm | ±0.01mm | 2 |



EQUIPMENT LIST

CNC milling machine

| production line | equipment | Processing size | precision | quantity |
|-----------------|---|-----------------|--------------|----------|
| CNC group | CNC milling machine 13 sets four axis 6 sets five axis 3 sets | 800×500 mm | 0.01~0.05 mm | 22 |



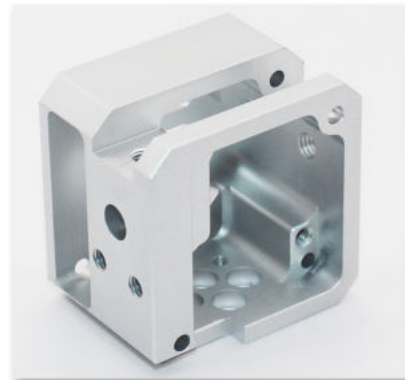
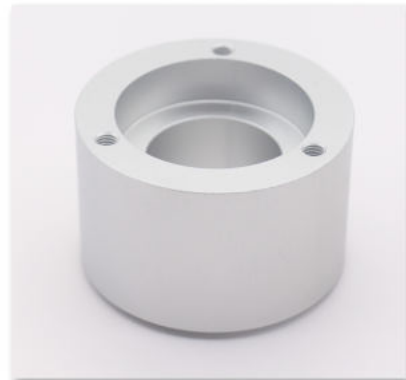
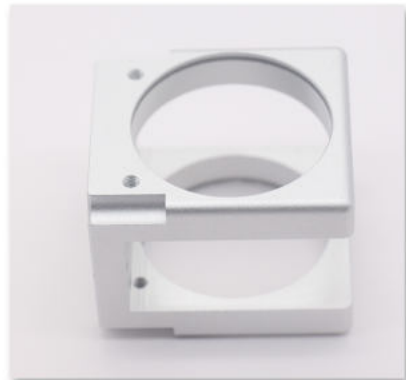
Other auxiliary equipment

| production line | Equipment use | quantity |
|-----------------------------|---|----------|
| Vibrating finishing machine | The workpiece and the abrasive rub against each other to achieve the effect of surface treatment. | 1 |
| Ultrasonic Cleaner | Cleaning workpiece attachment: cutting oil, abrasive, iron chip, dust, fingerprint. | 1 |
| stock-cutter | Rough cut material according to drawing size. | 1 |



ALUMINUM ALLOY PARTS SERVICE

Type: Plate, Bar, Pipe, Square, Profile,
Category : 6061,6063,7075,5052,6082



ALUMINUM ALLOY PARTS SERVICE

Type: Plate, Bar, Pipe, Square, Profile,
Category : 6061,6063,7075,5052,6082



STAINLESS STEEL PARTS SERVICE

Type: Plate, Bar, Pipe, Square, Profile,
Series: 200,300,400,500,600



COPPER SERIES

Type: plate, bar, pipe, square, profile

Category: pure copper T series, brass H series, bronze Q series, white copper B series



PLASTIC PARTS SERVICE

Type: Plate, Bar, Pipe, Square, Profile,

Series: POM/ABS/PEEK/PVC/PC/PP/Nylon/Bakelite/Acrylic



CUSTOM DIE CASTING

Die-casting material: aluminum alloy, zinc alloy, stainless steel, brass, plastic, nylon, etc.

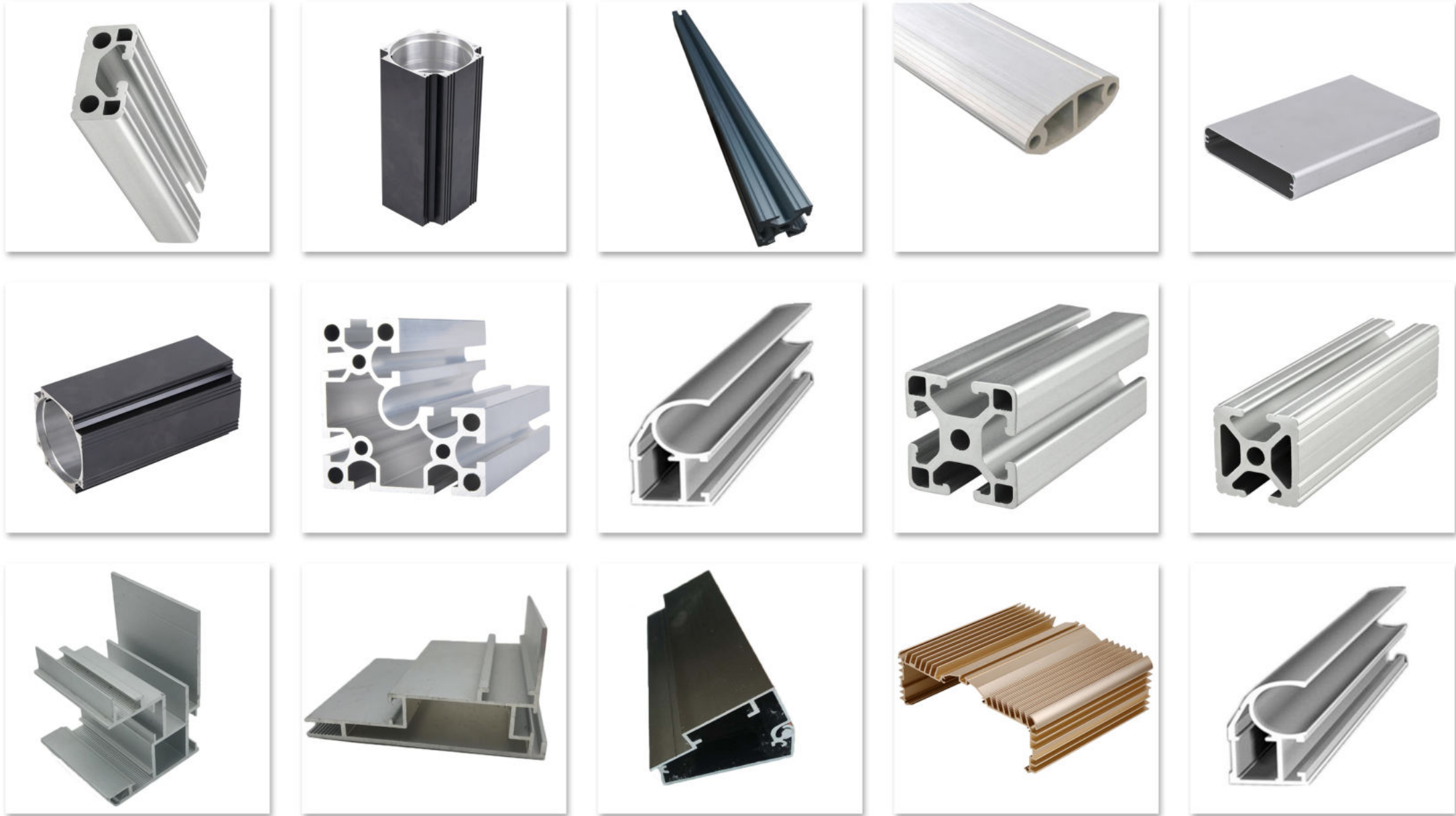
Tolerance: 0.01mm- +/-0.005mm



CUSTOM EXTRUSION

Material: Aluminum Alloy, Zinc Alloy, Stainless Steel, Brass, Plastic, Nylon, Etc.

Tolerance: 0.01mm- +/-0.005mm



PREMIUM OEM INVESTMENT CASTING

Material: Stainless Steel Investment Casting SS, Aluminum, Copper, Alloy



CUSTOM PLASTIC INJECTION

Material: ABS+PC, PP, PC, ABS, PA, HIPS, PVC, PE, PS, POM, ACRYLIC, PMMA

Surface Smooth : Mossy, Textured, Matte



PRECISION METAL STAMPING

Material: ABS+PC, PP, PC, ABS, PA, HIPS, PVC, PE, PS, POM, ACRYLIC, PMMA

Surface Smooth : Mossy, Textured, Matte

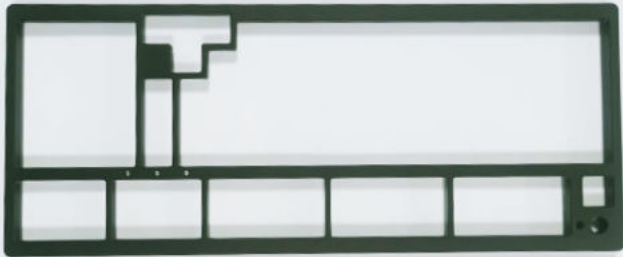




Chi Heng Hardware Co., Ltd

Mechanical Keyboard Case & Other Metal Case
60%, 65%, 75% Aluminium CNC Mechanical Keyboard Cases

Top



Weight

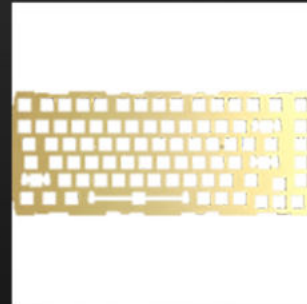
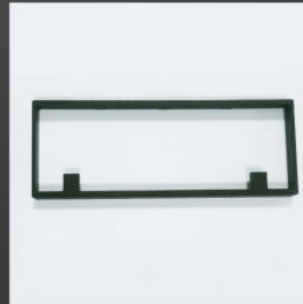


Bottom



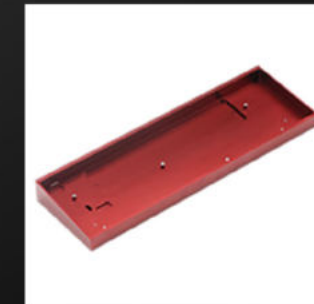
Material:

Brass
Aluminium
Stainless Steel....



Surface Finish:

Plating
Anodizing
Sand Blasting....



SURFACE TREATMENT

Process : Polishing/Heat Treatment/Anodic Oxidation
Sand Blasting/Electroplating/Teflon Coating/Rust Out
Nickel Plating/Chrome Plated, Etc.



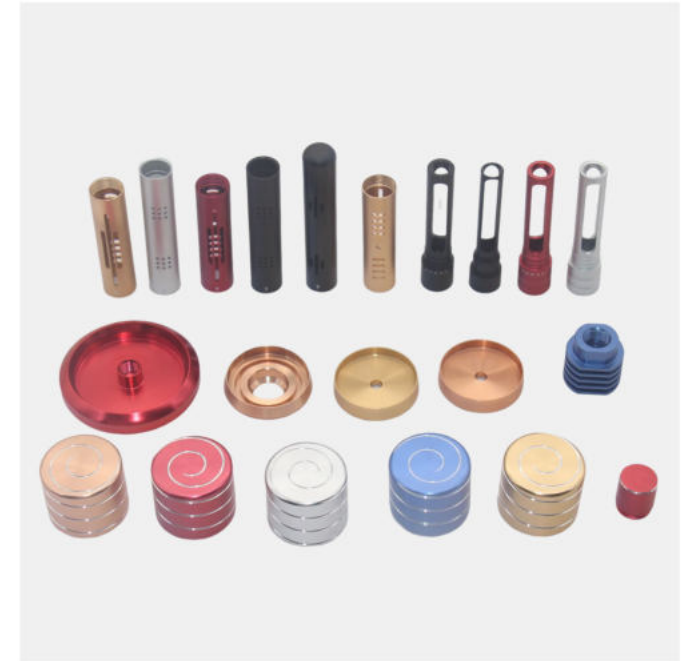
Mirror Polishing

Mechanical mirror polishing is to achieve a smooth, bright mirror-like surface on metal materials through the polishing process (rough grinding, fine grinding) and polishing process (WENDT three-step polishing).



Heat Treatment

Heat treatment refers to the material in solid state, through the means of heating, heat preservation and cooling, in order to obtain the expected structure and properties of a metal thermal processing technology.



Anodic Oxidation

Anodic oxidation can do a variety of color surface effect, aluminum alloy in the corresponding electrolyte and specific process conditions, due to the action of the impressed current, aluminum products (anode) on the formation of a layer of oxide film process.

SURFACE TREATMENT

Process : Polishing/Heat Treatment/Anodic Oxidation
Sand Blasting/Electroplating/Teflon Coating/Rust out
Nickel Plating/Chrome Plated, Etc.



Sandblasting Oxidation

The mechanical properties of the workpiece surface are improved, thus improving the fatigue resistance of the workpiece, increasing the adhesion between it and the coating, extending the durability of the coating film, but also conducive to the flow and decoration of the coating.



Teflon Coating

Excellent scratch resistance and corrosion resistance, high hardness, good wear resistance, excellent high temperature resistance, long-term high temperature use, luster and color stability. Green environmental protection, harmless to human body



Electroplating

Electroplating is the process of plating a thin layer of other metal or alloy on some metal surface using electrolysis principle, improving wear resistance, electrical conductivity, reflection, corrosion resistance and enhance beauty



Dongguan Chiheng Hardware Co., Ltd

Contact: Jion

Email: sales06@chihenghardware.com

Tel: +86 183 9872 5443 (Whatsapp)

Website: www.chihenghardware.com

Factory Address: No.18 Jin Tang Street, Shatou Village, Chang'an Town, Dongguan, Guangdong, China

